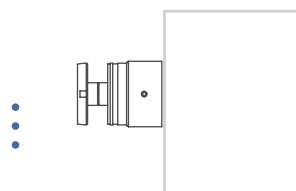
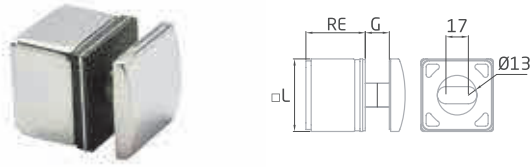


Sistema / System / Système
GlassFit CC-772



Sistema / System / Système
GlassFit CC-775



CC-772 AISI-316

BA SATIN

		RE	G
2	55	45-50	8-21,52




Regulable.
Adjustable.
Ajustable.



 0,8 kN

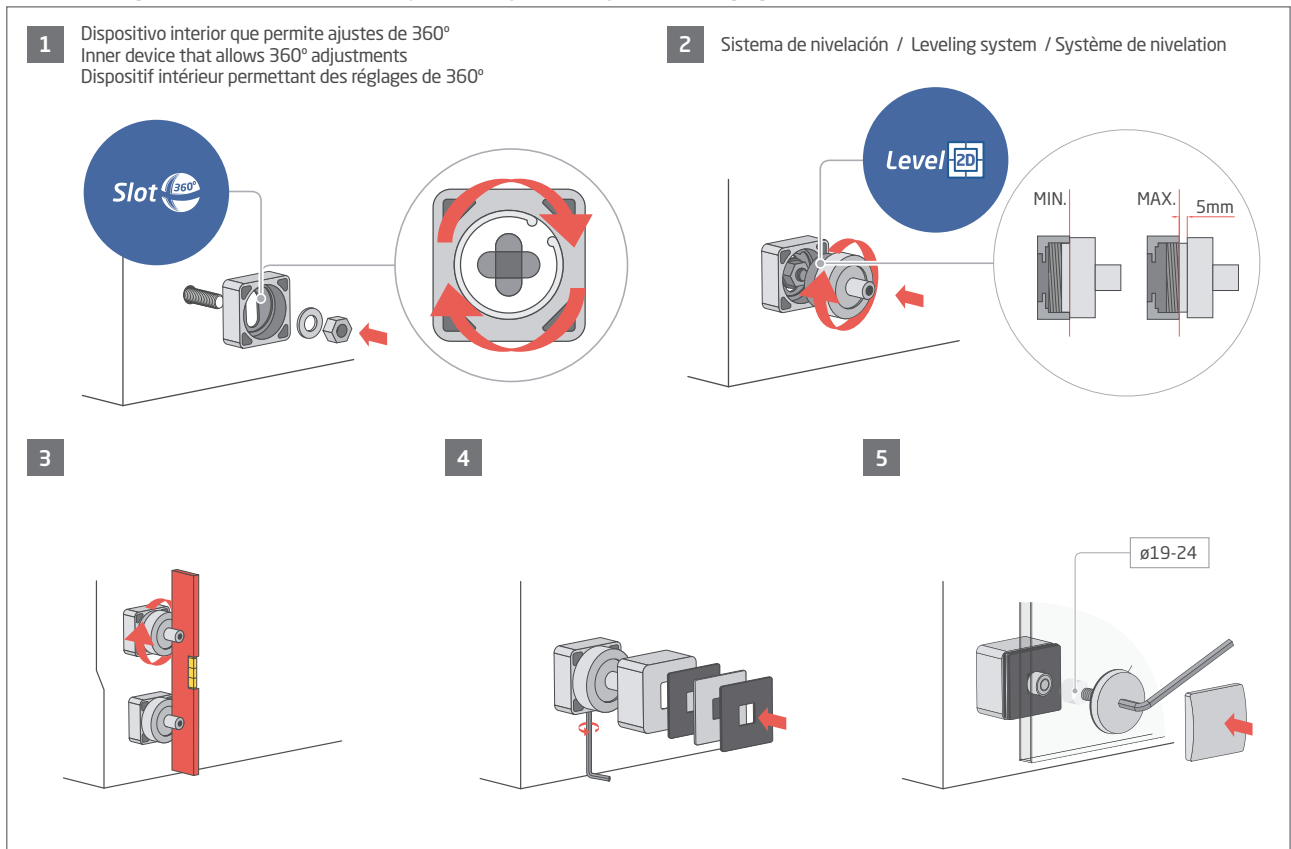


Posibilidades de anclaje CC-772 / Anchoring possibilities for the CC-772 / Possibilités d'ancrage CC-772

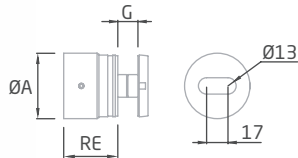
	0,8 kN/m	FIS V (FIS VS 300 T) + DIN-975 M10 + DIN-125 M10+ DIN-934 M10	Cracked / Uncracked
	0,8 kN/m	FAZ II M12X120 (B.12)	Cracked / Uncracked
	0,8 kN/m	FBN II M10X96 (B.10)	Uncracked

* Cracked / Uncracked
Hormigón Traccionado / Hormigón Comprimido
Béton comprimé / Béton en traction

Sistema de regulación CC-772 / CC-772 adjustment system / Système de réglage CC-772



 Ver video de instalación en / Watch installation video at / Voir video d'installation à www.comenza.com



CC-775 D.50 AISI-316

BA SATIN

Ø	RE	G
2	52	45-50
		8-21,52

BR-2030

Ø
1
45-50

Regulable.
Adjustable.
Ajustable.



ESP 0,8 kN



Posibilidades de anclaje CC-775 D.50 / Anchoring possibilities for the CC-775 D.50 / Possibilités d'ancrage CC-775 D.50

ESP	0,8 kN/m	FIS V (FIS VS 300 T) + DIN-975 M10 + DIN-125 M10+ DIN-934 M10"	Cracked / Uncracked
ESP	0,8 kN/m	FAZ II M12X120 (B.12)	Cracked / Uncracked
ESP	0,8 kN/m	FBN II M10X96 (B.10)	Uncracked

* Cracked / Uncracked
Hormigón Traccionado / Hormigón Comprimido
Béton comprimé / Béton en traction



CC-775 D.30 AISI-316

BA SATIN

	ØA	RE	G
2	33	35-40	8-17,52

BR-2030

	Ø
1	30-32

Regulable.
Adjustable.
Ajustable.



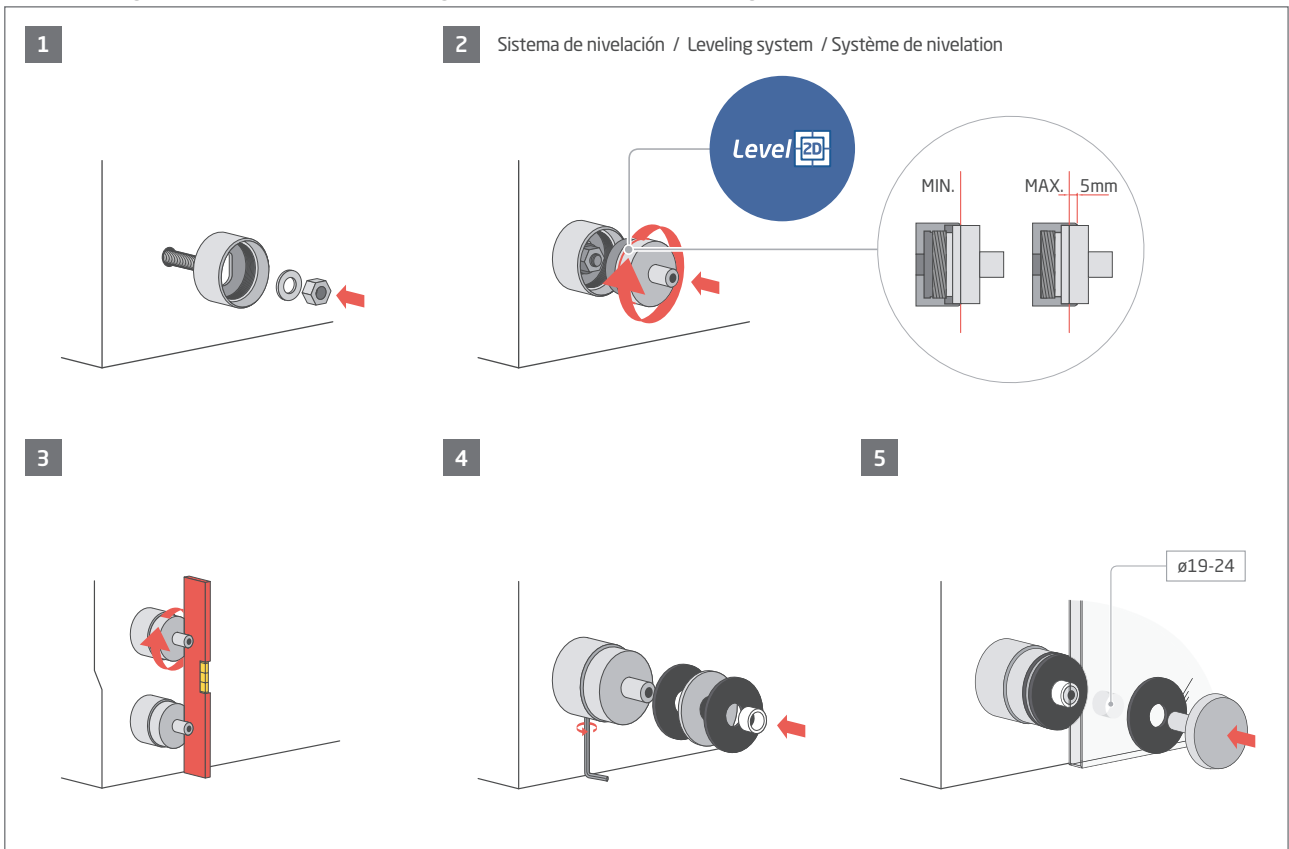
Posibilidades de anclaje CC-775 D.30 / Anchoring possibilities for the CC-775 D.30 / Possibilités d'ancrage CC-775 D.30

FIS V (FIS VS 300 T) + DIN-975 M8 + DIN-125 M8+ DIN-934 M8

Cracked / Uncracked

* Cracked / Uncracked
Hormigón Traccionado / Hormigón Comprimido
Béton comprimé / Béton en traction

Sistema de regulación CC-775 / Sistema de regulación CC-775 / Sistema de regulación CC-775



 Ver video de instalación en / Watch installation video at / Voir video d'installation à www.comenza.com